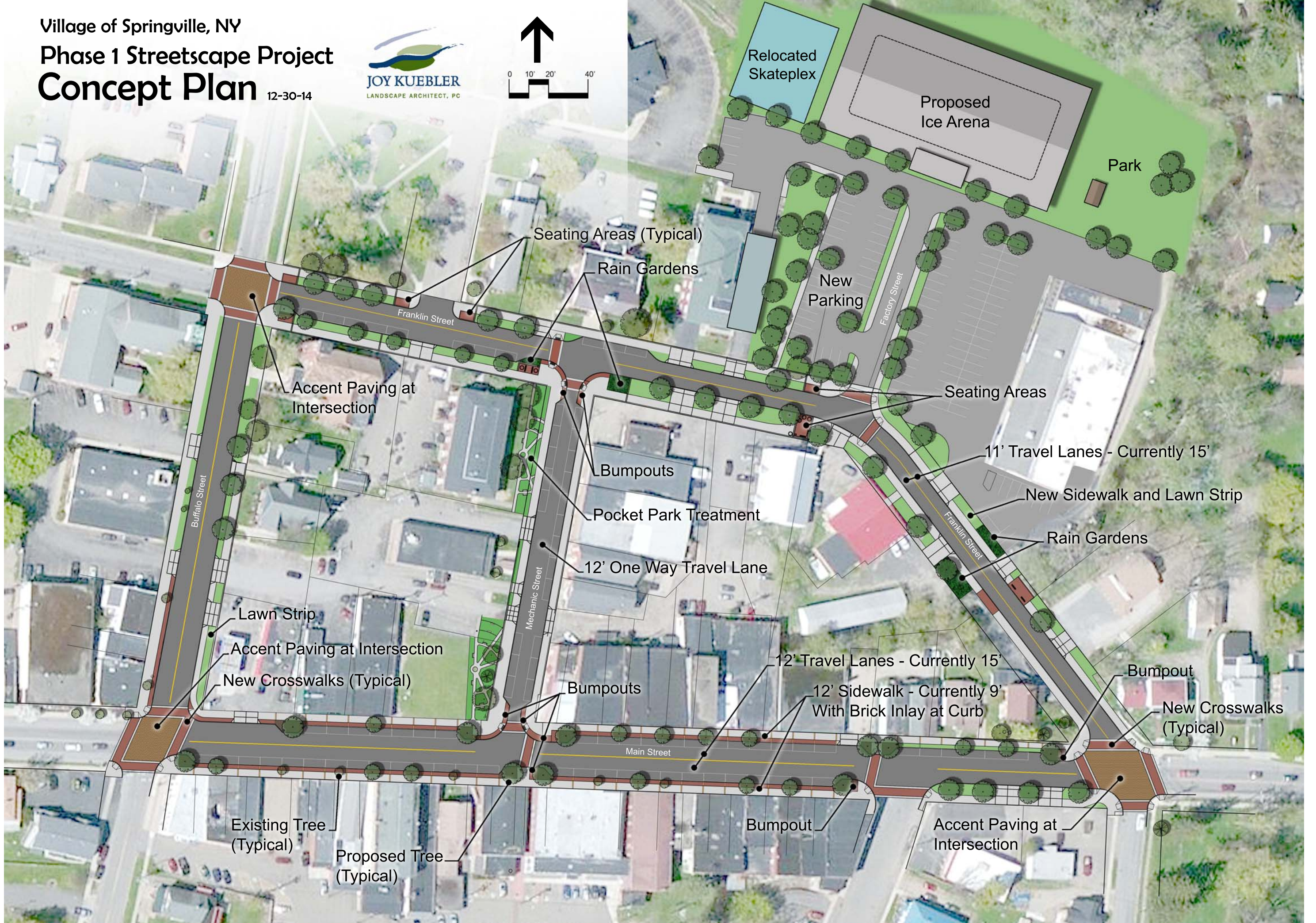
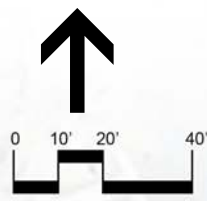


Village of Springville, NY
Phase 1 Streetscape Project
Concept Plan 12-30-14



Relocated Skateplex

Proposed Ice Arena

Park

Seating Areas (Typical)

Rain Gardens

New Parking

Franklin Street

Accent Paving at Intersection

Seating Areas

11' Travel Lanes - Currently 15'

New Sidewalk and Lawn Strip

Rain Gardens

Bumpouts

Pocket Park Treatment

12' One Way Travel Lane

Buffalo Street

Lawn Strip

Accent Paving at Intersection

New Crosswalks (Typical)

Mechanic Street

Bumpouts

12' Travel Lanes - Currently 15'

12' Sidewalk - Currently 9'
With Brick Inlay at Curb

Bumpout

New Crosswalks (Typical)

Main Street

Bumpout

Accent Paving at Intersection

Existing Tree (Typical)

Proposed Tree (Typical)