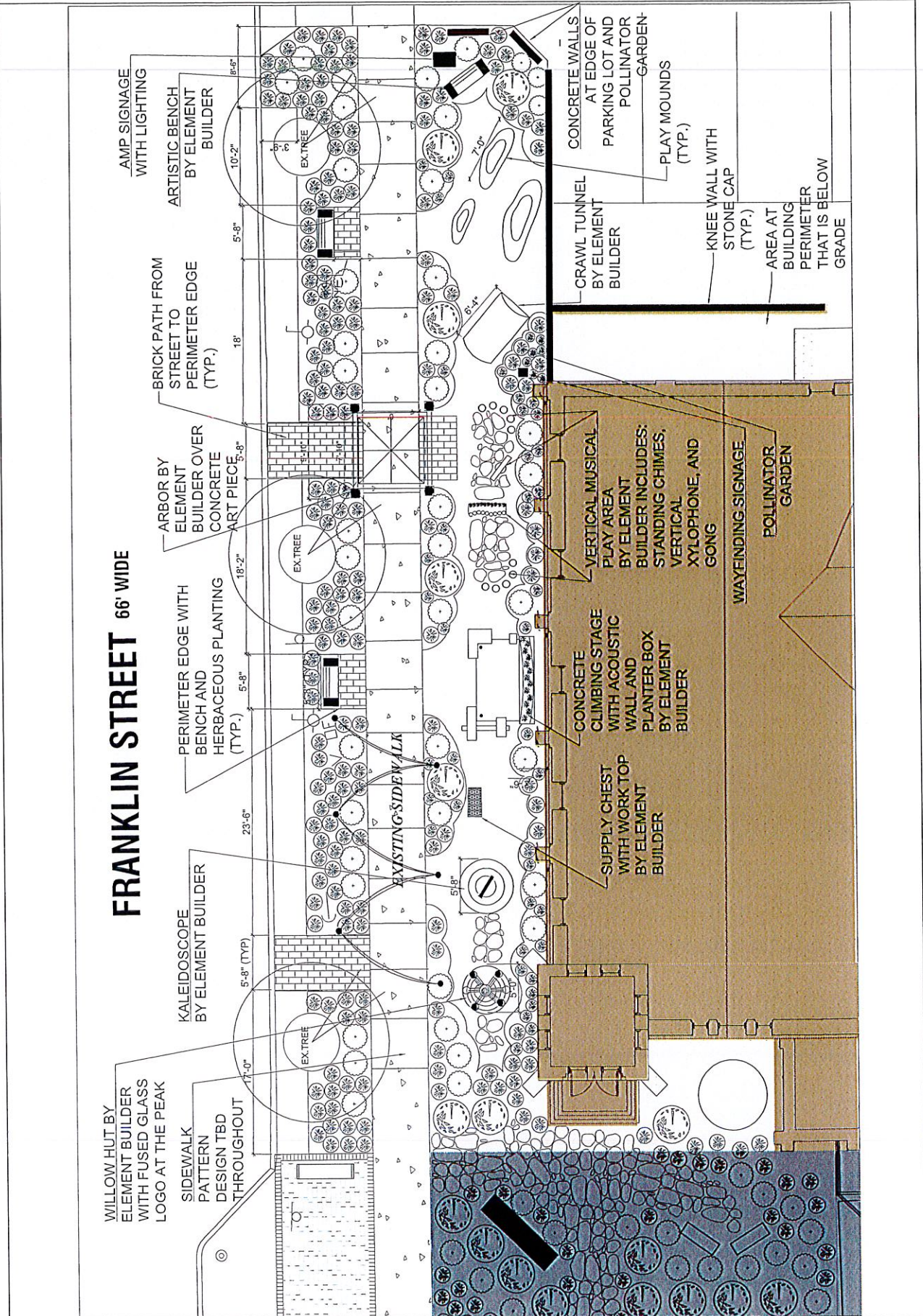




032122 A.1

# FRANKLIN STREET 66' WIDE



AMP SIGNAGE WITH LIGHTING

ARTISTIC BENCH BY ELEMENT BUILDER

BRICK PATH FROM STREET TO PERIMETER EDGE (TYP.)

ARBOR BY ELEMENT BUILDER OVER CONCRETE ART PIECE

PERIMETER EDGE WITH BENCH AND HERBACEOUS PLANTING (TYP.)

KALEIDOSCOPE BY ELEMENT BUILDER

WILLOW HUT BY ELEMENT BUILDER WITH FUSED GLASS LOGO AT THE PEAK

SIDEWALK PATTERN DESIGN TBD THROUGHOUT

EXISTING SIDEWALK

EXISTING TREE

EXISTING TREE

CRAWL TUNNEL BY ELEMENT BUILDER

VERTICAL MUSICAL PLAY AREA BY ELEMENT BUILDER INCLUDES: STANDING CHIMES, VERTICAL XYLOPHONE, AND GONG

CONCRETE CLIMBING STAGE WITH ACOUSTIC WALL AND PLANTER BOX BY ELEMENT BUILDER

SUPPLY CHEST WITH WORK TOP BY ELEMENT BUILDER

WAYFINDING SIGNAGE

POLLINATOR GARDEN

CONCRETE WALLS AT EDGE OF PARKING LOT AND POLLINATOR GARDEN

PLAY MOUNDS (TYP.)

KNEE WALL WITH STONE CAP (TYP.)

AREA AT BUILDING PERIMETER THAT IS BELOW GRADE

## Summary of Village requirements for SCA Art Mini Park.

Meeting with Liz Melock, Mike Kaleta, Duane Boberg, Seth Wochensky and Tracy Maybray at Village Office on March 1, 2022 at 8:30 am.

Site drawing dated 10/25/2021 was reviewed.

After discussion the following are the requirements for the project to proceed to HPC meeting on 03/14/2022, Village Board meeting on 03/21/2022 and then to Mike for building permit:

1. Sidewalk is only four (4) feet. The village requires 5 ½ - 6 feet clearance for the sidewalk plow and snow storage. No plantings, benches, removable arch, musical elements are allowed to be in the required clearance area of the sidewalk.
2. Benches in the right of way (north side of sidewalk) must be removed from the period of Nov 1<sup>st</sup> or earlier if we have snow till April 1<sup>st</sup> each year.
3. Arch over the sidewalk must have a clearance of eight feet in height and the width of the sidewalk so nothing impedes movement on the sidewalk.
4. The arch must be removed from the period of Nov 1<sup>st</sup> or earlier if we have snow till April 1<sup>st</sup> each year.
5. Brick paths must be flush with the ground to allow clearance of the sidewalk plow.
6. Plantings in the right of way must be maintained by SCA to remove weeds and not have the area become overgrown. The Village pays for the beds on Franklin to be groomed as this area needs to be maintained to not detract from the beds with weeds growing through the ground cover.
7. Sidewalk on Franklin between SCA building and right of way can be dyed but no paint can be applied. Sidewalk must not be slippery.
8. Water box – on Franklin St – Village Water Dept to move to grade level.
9. Guy wire off village utility pole on Franklin St will have a yellow safety collar (bollard) installed on it by Village Electric Dept.

On drawing submitted by Seth dated 3/8/2022 we need clarification on the arches drawn across the sidewalk to the north of kaleidoscope. What is this as it was not on the drawing presented at the meeting on March 1, 2022.

# The Arts Mini Park

## Goals:

- Create an inviting garden space that encourages spontaneous play amongst young children through the incorporation of custom-built interactive elements.
- Utilize materials and designs that are sympathetic with the original historic structure but distinct as contemporary additions.
- Create exterior grounds that reflect the dynamic arts activity that occurs within the building.

## Willow Hut

Pg 11-12

Round Sphere interrupted by the ground

5'x5'

Fabricated of  $\frac{3}{8}$  steel rod shaped in a spiral pattern with flourishes inspired by the "Logo Window" to provide immediate visual interest

Willow or other climbing vines covers the structure

Entry through 3' tall segmented arch opening

Wood chip floor, flagstone at entry

10 1/2" fused glass version of Logo Window at peak

Secured to rods driven into the ground.

Additional baubles may be attached inside

## Light Zone

Pg 13

Primary Element - Kaleidoscope -

Tiered round concrete base acts as steps

Bottom layer is 68" diameter, total height ~50"

Glass embedded in concrete vertical surfaces

"Tripod" made of salvaged gears, wrought iron

Tube is 4"x 2'-6" copper with operable gears

Secondary Elements

Smaller light-play on rods (tiny kaleidoscopes, spheres)

## Visual Zone

Item not yet designed

## Crawl-Stage

Pg 14-21

6x8 stage doubles as structure to crawl, climb, tumble over.

Concrete with embedded pigment

Rough surfaces - thin strips in forms, textures

Ruinous shapes, a derelict castle

Echos the building with gothic arches, embedded quatrefoil shape, stone hammering pattern on back wall

Juniper and phlox planter on top of back wall

Back wall has curvature to focus sound on opposing bench

Rear of structure has a spherical "sound mirror" indentation

## Music Zone

Vertical chimes

Pg 22

Pipes support copper tubes

Flagstone at base

Xylophone

Pg 23

Vertical orientation with copper/brass tubes

Allows for vegetation to grown up edges

Visually interesting arrangement of tubes

Flagstone at base

Gong

Pg 24

Copper plated recycled tank

Incorporated striker mechanism

## Physical Zone

Mounds for play

Tube you can crawl through, add "tone tongues" - cut sections that resonate

## End Bench Area

Stone-capped Knee Wall as per other permit

Concrete Fence

Pg 25

Rough pour

Sitting on beveled pads

Sign -

Front sign part of separate permit.  
(Will be monument sign made of stone, brick)

Rear Masonry Column  
Pg 32  
Stone Capped  
12x12  
Backlit metal logo window image

## Vegetation Notes

Pg 10  
More organic forms made of herbaceous plants  
Narrow access points to zones  
Apple tree

## Right of Way

Continue theme from Franklin Street streetscape design

Planting zone incorporates existing trees and posts

Brick Walkways connect street. Interrupt the brick pattern with interesting wave forms Pg 28-29

Benches. On concrete pads. Artistic design not yet developed. Removed in winter.

Receiver holes to accept posts able to hold overhead fabric zig zag for events

Sidewalk to have dye/stain applied along length. Pg 26-27

## Arbor

Pg 30-31  
6' wide, ~8' tall Rib Vault / Gothic Arch Groin Vault  
Wrought Iron scrollwork  
Glass elements, lights weaved in it  
Removed in winter

## Additional Notes

Wayfinding sign similar to existing  
Secondary elements interspersed - bug houses, terracotta shapes, plant labels, giant marbles, little bells, etc.

*Village of Springville  
Historic Preservation Commission*

March 14, 2022

7:00 pm

A meeting of the Historic Preservation Commission of the Village of Springville was held at the Municipal Building, 65 Franklin Street, Springville, New York at the above date and time. Present were:

Absent

*Members:*

Bill Skura Chairman  
Helen Brogan  
Don Orton-Absent  
John Baronich-Vice Chairman  
Eric Tuberdyke

*Also present:*

Reed Brayman  
Melissa Frank-40 E. Main Street  
Seth Wochensky-37 N. Buffalo St.  
Tracy Maybray-37 N. Buffalo St.

*Clerk:*

Jennifer Blumenstein

After the Pledge of Allegiance, Chairman Skura called the meeting to order at 7:00p.m.

Chairman Skura asked for a motion to approve the minutes from the January 10, 2022 meeting.

*John Baronich made the motion to approve the minutes after one correction, seconded by Eric Tuberdyke. All in favor, none opposed.*

A Certificate of Appropriateness came before the Board from Melissa Frank representing Metro Kirsch Real Estate, located at 40 E. Main Street. Melissa stated that they wanted to update and refresh the existing sign on the building.

After some discussion and review of the Certificate, Chairman Bill Skura asked for a motion to vote.

*Helen Brogan made the motion to approve as presented with the stipulation to return if any changes are made to the approved sign. Seconded by John Baronich. All in favor, none opposed.*

The next Certificate of Appropriateness before the Board came from the Springville Center for the Arts. This Certificate of Appropriateness was originally TABLED August 9, 2021.

March 14, 2022

Page (2)

Springville Center for the Arts is looking to put in an Arts Mini-Park. This is going to be a creative play space for kids. It would include a Willow Hut, Light Zone, Crawl Stage, Music Zone, Physical Zone, Sitting Area and an Arbor. Throughout the entire area will be Herbaceous Plants and interrupted Brick Pattern with interesting Wave Forms along with Stained Sidewalks.

Seth walked the Board through each proposed station, explained the concept, answered questions and showed picture and drawings.

Chairman Skura mentioned that he liked the ideas and concepts that were presented, but there was concern by himself and John Baronich on who will maintain the area after completion. Seth mentioned that the Springville Center for the Arts have hired maintenance personnel to take care of this.

After much discussion, Chairman Skura made the motion to approve the Concept and Construction as presented with the Stipulation that any changes and updated must come before the Board. Seconded by Eric Tuberdyke. All Approved, none opposed.

The Historic Preservation Board is going to request some changes to the wording in regards to Roofing in the Design Standards. They would like a letter sent to the Village Board for approval.

The Board would like a letter sent to Tom Roberts and Jenica Knight from 18 E. Main Street. This letter is to inform them that the Certificate of Appropriateness which was submitted on 5/8/2020 is no longer valid and if any work is to continue, a new Certificate of Appropriateness and Drawings will be needed.

The Board would like a letter sent to John and Laura Safford in regards to the properties at 64/74 W. Main Street. The Board is looking for updates on the progress on those properties.

*John Baronich made the motion to adjourn at 8:30 pm, seconded by Helen Brogan. All in favor, none opposed.*

Respectfully Submitted,

Jennifer Blumenstein